

NHBC Accepted Housing Oversite Concrete

Information for House Builders / Ready Mix / Contractors



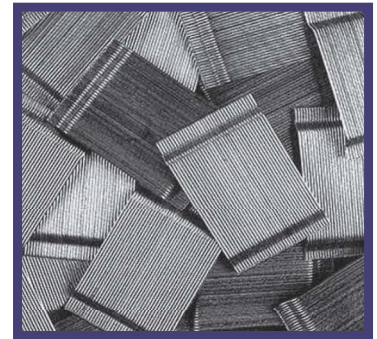
House floor systems produced by the following companies have accepted Adfil fibres on their current certificates for NHBC approved house floor toppings (BBA & KIWA)

- Springvale
- Jablite
- Rackhams
- Litecast
- Forterra
- Styrene
- Others*

Durus®
EasyFinish
**



Adfil®
SF86
**



Durus®
S400



*There are other floor systems that may also have issued certificates that adhere to the NHBC requirements, please refer to each individual system certificate and information for the accepted dosages.

****NOTE: Always check with Adfil to ensure that the fibre product and dosage information for the specific system is correct. Information is available on the Adfil website: www.adfil.com.**

Please contact us for assistance or visit our website www.adfil.com to view our guidance films.

NHBC Accepted Housing Oversite Concrete

Information for House Builders / Ready Mix / Contractors



Durus®
EasyFinish

- **Cost effective dosage per m³**
- **Mixes and finishes better than other longer fibre products.**
- **Nationwide availability**
- **Accepted in NHBC flooring systems**
- **Approved by the beam & block floor manufacturers**

- **Cost Effective Dosage per m³** - Adfil have invested in extensive R&D, new state of the art manufacturing equipment and accredited testing to ensure that you get a cost effective dosage for fibre reinforced concrete.
- **Mixes and finishes better than longer fibres** - Ready Mix Suppliers are happy that our shorter length fibres makes it easier to mix in the concrete. Installers rarely report any finishing issues.
- **Nationwide availability** - Durus EasyFinish is the macro fibre product of choice for many Contractors. This product is readily available from most Ready Mix plants nationwide.
- **Accepted in NHBC approved flooring systems** - This gives you assurance that our fibres comply with all the necessary requirements for use.

Concrete Types

Durus® EasyFinish can be used in Slump Concrete with S3 or S4 consistence, or in Self Compacting with flow consistence of SF3 & SF4. The concrete will arrive on-site with the fibres already added at the required dosage from your Ready Mix supplier.

Installation

When using Slump concrete with **Durus® EasyFinish** it can be easily placed with a rake and finished with a conventional float. Screed bars or magic screeders are also sometimes used.

Where SCC with **Durus® EasyFinish** mixes are used, a dapple bar should be used to finish the concrete after placement. This will orientate the fibres horizontally beneath the concrete surface.

Installation should be in accordance with the BPF 'Application Guide for the Specification & Installation of concrete toppings to beam & EPS suspended floors'.

